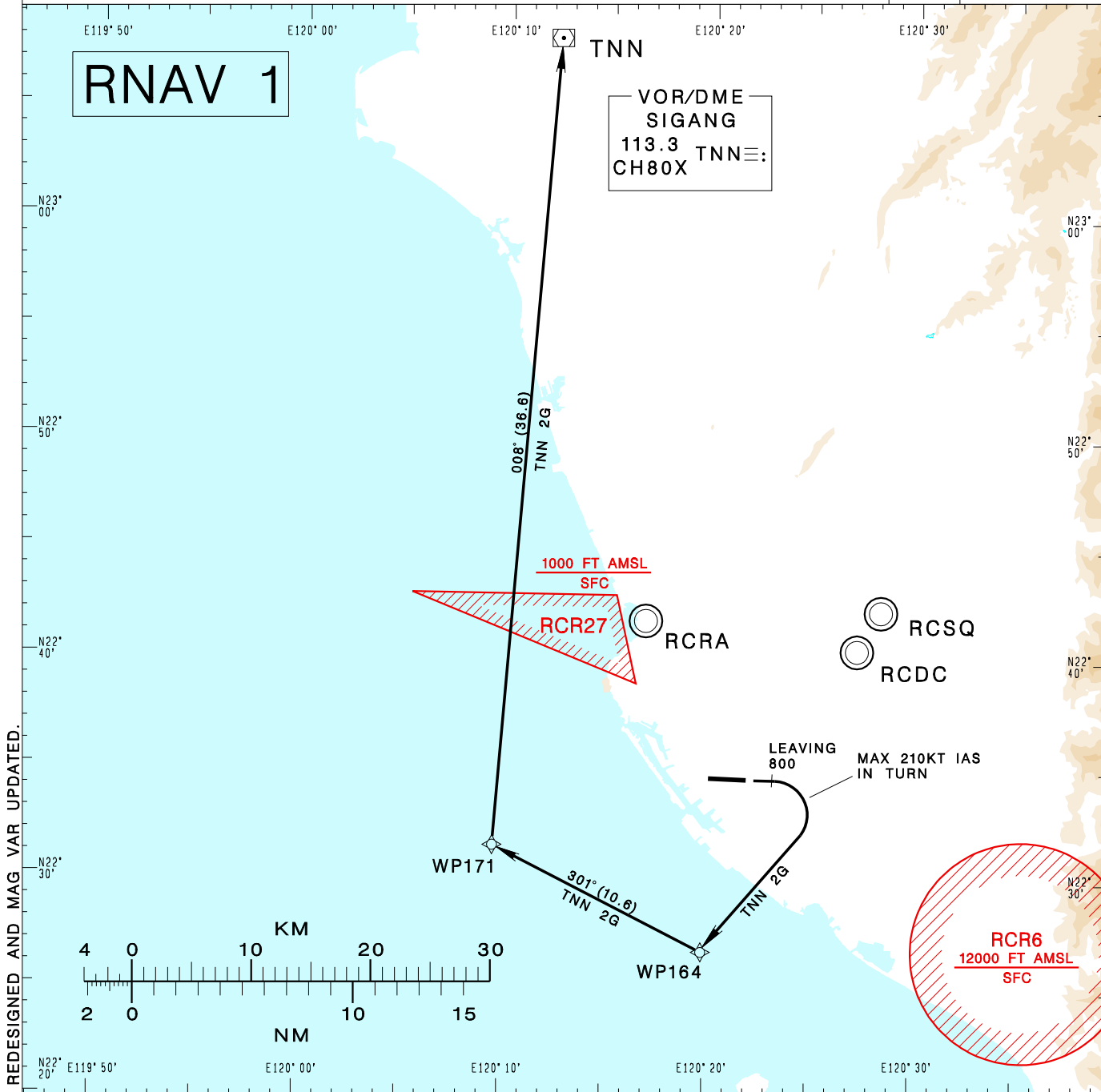


高雄國際機場
KAOHSIUNG INTL AD

RCKH SID
TNN 2G RNAV(RWY09)

KAOHSIUNG APP 124.7 125.7	KAOHSIUNG TWR 118.7 120.7	ATIS 127.8	VAR 4°W-2023 ↑	12100' MSA ARP 25NM
Apt Elev: 32'		Trans Level: FL130		
BEARINGS ARE MAGNETIC; DISTANCES ARE NAUTICAL MILES; ELEVATIONS, HEIGHTS IN FEET				



CHANGES: LEG BEFORE WP164 REDESIGNED AND MAG VAR UPDATED.

SIGANG TWO GOLF RNAV DEPARTURE
Climb on RWY HDG until leaving 800ft, then turn right direct to WP164, then to WP171, TNN. Cross WP164 at or above 4,000ft. Cross WP171 at or above 8,000ft.

- NOTE**
1. Minimum climb gradient required: 6.0%(365ft/NM) until 2,000ft. Speed restriction of 210KT IAS maximum until established on track to WP164.
 2. Caution: pier cranes, terrain and stacks east, west and south of the airport.
 3. ATS surveillance required.